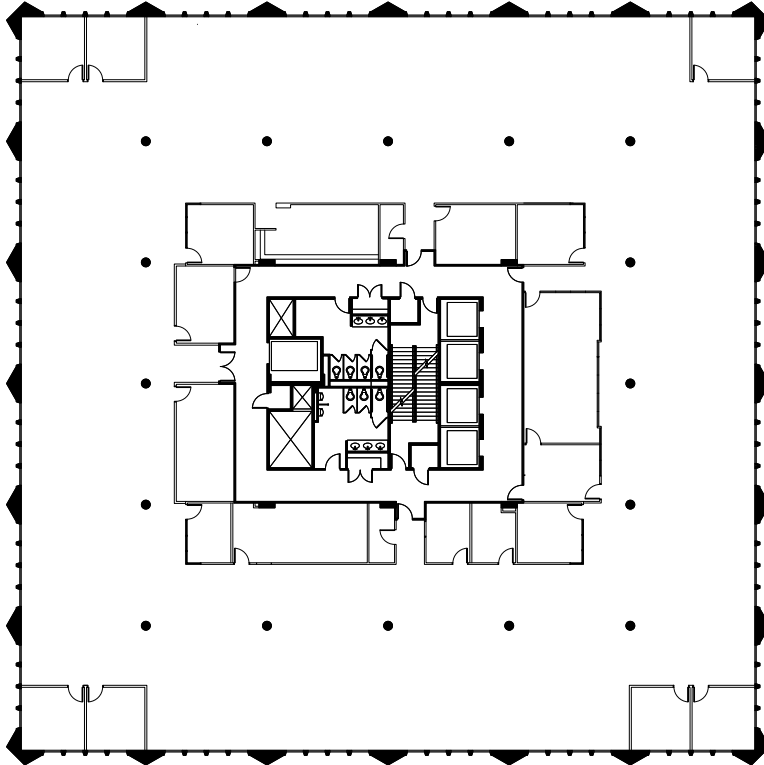




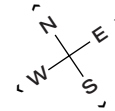
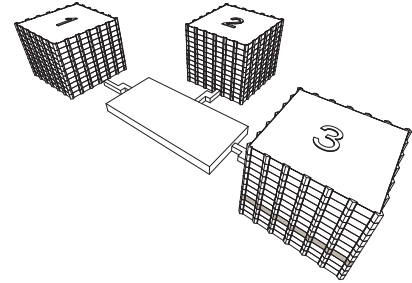
TOWER 3 - SUITE 400

23,682 RSF



CONTINENTAL TOWERS

1701 Golf Rd
Rolling Meadows, IL



LEASING

Dave Trumpy
Managing Director
dtrumpy@glenstar.com
773.308.1031

—

Bill Saviski
Managing Director
bsaviski@glenstar.com
773.837.5290

CONTINENTAL-TOWERS.COM

PROPERTY HIGHLIGHTS

- Three, Class A office buildings totaling 910,000 SF
- \$28 million renovation completed in 2020
- Over 1 acre of outdoor landscaped terraces
- New lobbies, corridors, game room and tenant lounge
- Midtown Fitness health club
- Highway access from two 4-way interchanges
- WiredScore Platinum certification

SUITE FEATURES

- Full floor opportunity
- Part of a contiguous block up to 59,595 RSF
- Prebuilt corner and interior offices for more efficient fitout
- Open area for workstations
- 2 conference rooms
- 2 kitchen/break rooms
- Views of the forest preserve