

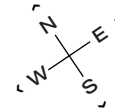
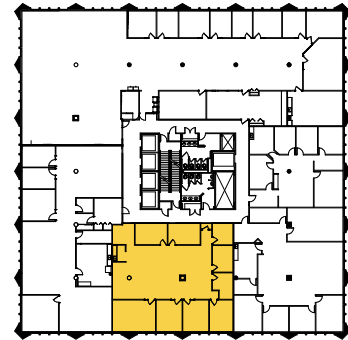
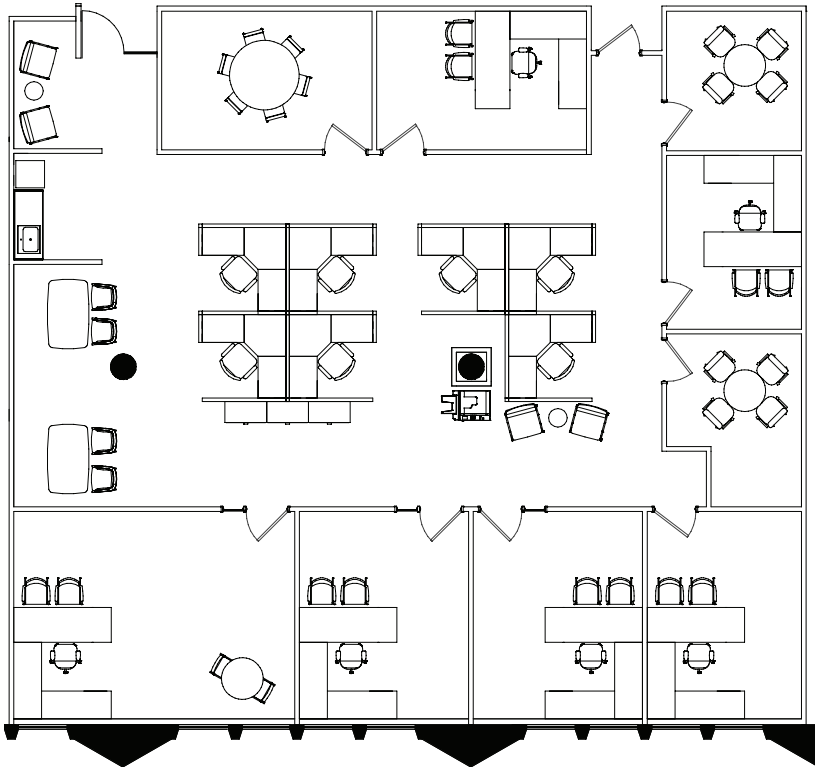


TOWER 1 - SUITE 1110

# 3,401 RSF

CONTINENTAL TOWERS

1701 Golf Rd  
Rolling Meadows, IL



#### LEASING

**Dave Trumpy**  
Managing Director  
dtrumpy@glenstar.com  
773.308.1031

—

**Bill Saviski**  
Managing Director  
bsaviski@glenstar.com  
773.837.5290

CONTINENTAL-TOWERS.COM

#### PROPERTY HIGHLIGHTS

- **Three, Class A office buildings totaling 910,000 SF**
- **\$28 million renovation completed in 2020**
- **Over 1 acre of outdoor landscaped terraces**
- **New lobbies, corridors, game room and tenant lounge**
- **Midtown Fitness health club**
- **Highway access from two 4-way interchanges**
- **WiredScore Platinum certification**

#### SUITE FEATURES

- New construction spec suite with CAT 6 cabling and new furniture
- 6 private offices
- 7 workstations
- 1 conference room and 2 huddle rooms
- Kitchenette
- Summer 2021 delivery